

**DATARIO MULTIPO**  
*MULTIPLE DATE STAMP*  
 MEHREERE DATUMSTEMPEL

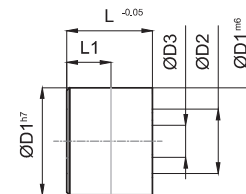
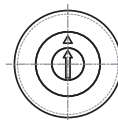
# EDA-D

**Acciaio:** Temprato  
**Steel:** Hardened  
**Stahl:** Gehärtet



**Durezza:** 50-55 HRC  
**Hardness:** 50-55 HRC  
**Härte:** 50-55 HRC

**Specifiche:** Temperatura massima di utilizzo: 150°C  
**Specifications:** Maximum operating temperature: 150°C  
**Spezifikationen:** Max. Betriebstemperatur: 150°C



D1	D2	D3	L	L1
6	4	2	12	6
8	5	2,5	12	6
10	6	3	12	6
12	8	4	14	7
16	10	5	14	7
20	12	6	16	8